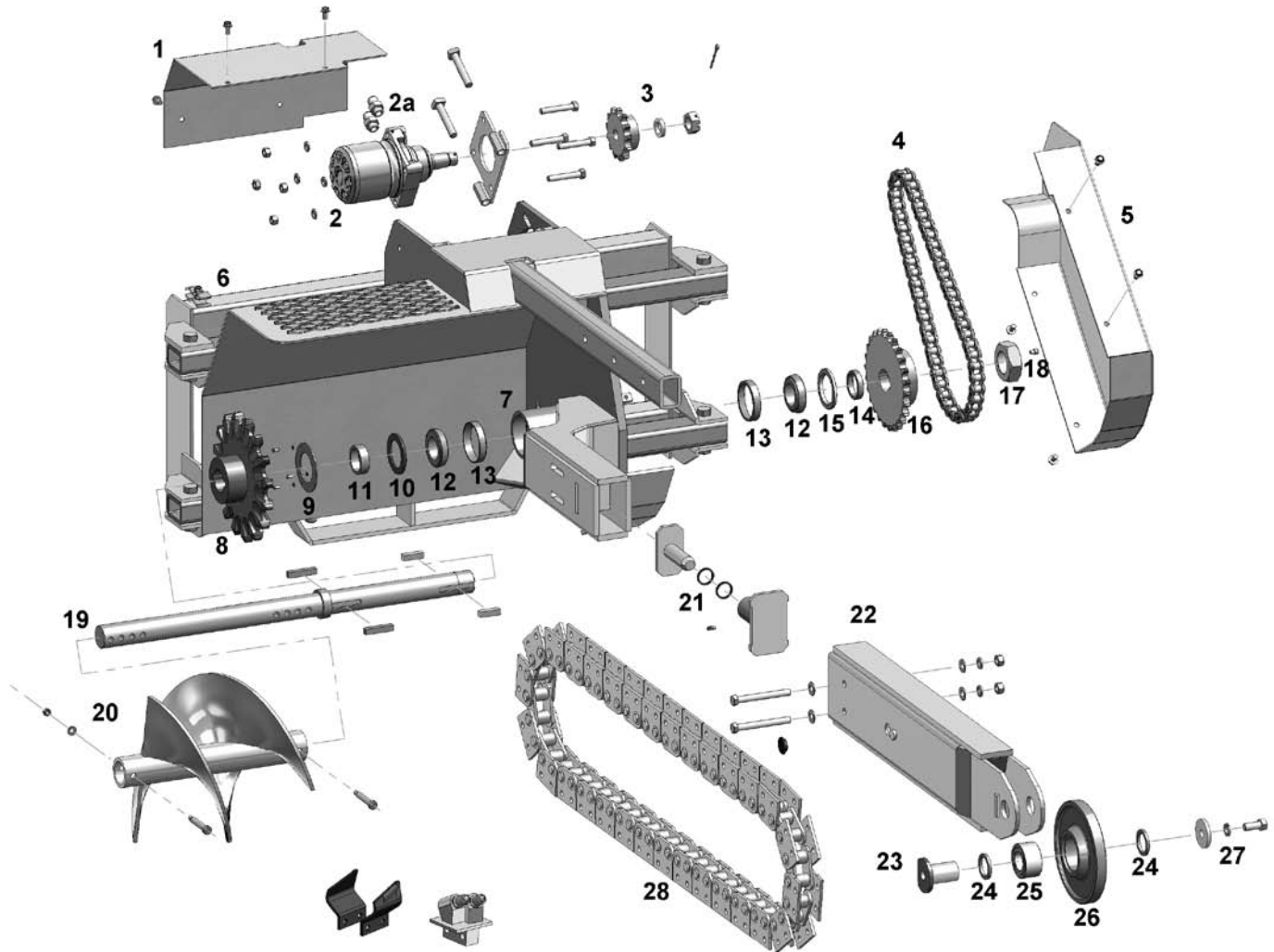


Exploded Parts Diagram: MODEL XR-14, XR-21, & XR-25



- | | | | | | |
|-----|------------|------------------------------------|------|----------|--------------------------|
| 1) | TR-501AXR | Motor Cover | 16) | TR80-26X | Driven Sprocket |
| 2) | MEL-12K | Hydraulic Motor for X-14 Trencher | 17) | P2-12 | Hex Jam Nut |
| | MEL-18K | Hydraulic Motor for X-21 Trencher | 18) | TR-520C | Holding Bolt |
| | MEL-21K | Hydraulic Motor for X-25 Trencher | 19) | CR200-X | Drive Shaft |
| 2a) | TR-504X | Motor to hose fitting (2 required) | 20) | TR-508X | Spoil Auger |
| 3) | TR80-13XR | Motor Sprocket (includes keys) | 21) | TR-518X | Grease Cylinder Assembly |
| 4) | TR21-506SH | Drive Chain (includes master link) | 22) | TR-510AX | Boom for 24" Depth |
| 5) | TR-501X | Drive Chain Cover | 22a) | TR-510BX | Boom for 36" Depth |
| 6) | TR-500XR | Trencher Housing | 22b) | TR-510CX | Boom for 42" Depth |
| 7) | TR-517 | Grease Fitting | 22c) | TR-510DX | Boom for 48" Depth |
| 8) | TR-16016X | Drive Sprocket (digging chain) | 22d) | TR-510EX | Boom for 60" Depth |

HBK - Hub Bearing Kit (# 9-15)

- | | | |
|-----|----------|--|
| 9) | TR-518 | Seal Protection Plate
(includes cap screws) |
| 10) | 10-24982 | Shaft Seal |
| 11) | TR-507 | 3/4" Shaft Spacer |
| 12) | 10-368A | Bearing Cone (2 required) |
| 13) | 10-362A | Bearing Cup (2 required) |
| 14) | TR-507B | 1/2" Shaft Spacer |
| 15) | 10-25028 | Shaft Seal |

IK - Idler Kit (# 23-27)

- | | | |
|-----|-----------|---|
| 23) | TR-514X | Shaft/Lockwasher/Bolt |
| 24) | TR-515X | Spacers (2 required) |
| 25) | TR-516X | Sealed Bearing |
| 26) | TR-16000X | Idler Roller |
| 27) | TR-514FW | Flat Washer |
| 28) | Note | Trencher Chain (see parts price list for options) |